

# Colour Complements

HAND DYED CREATIVITY

**FUN, FAST  
Easy to  
Stitch!**

## Summer Mini Sampler

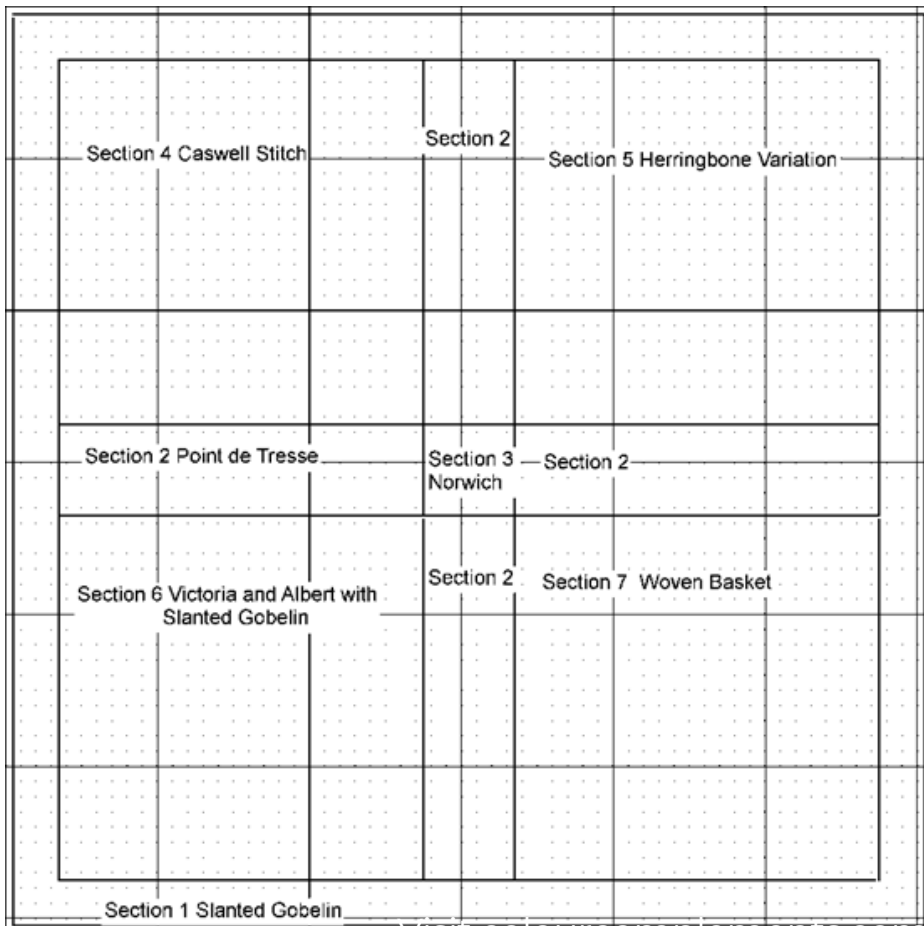
Design size is 60 x 60 threads on 18 count mono canvas.

Each quarter is 24 threads square.  
The outer border is 3 threads.  
The wide inner sashing is 6 x 24.  
The center square is 6x6.

Size 5 perle is used, one skein of each colour! \*\*You'll be able to stitch more than one!



DESIGNED BY DRAGONLADY CANVASWORK DESIGNS



Section 1  
Slanted Gobelin Colour 183

Section 2  
Point de Tresse Colour 183

Section 3  
Norwich Colour 51

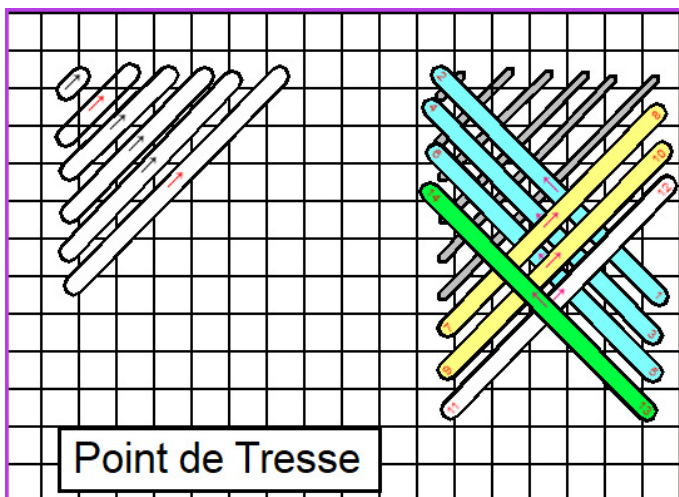
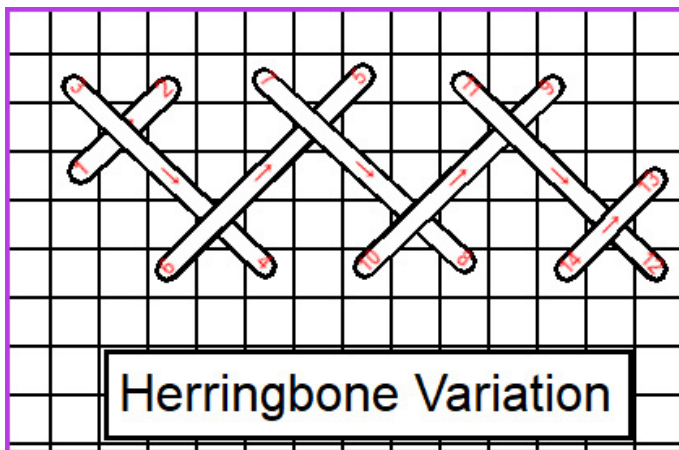
Section 4  
Caswell Colours 51 & 64

Section 5  
Herringbone Variation Colour 50

Section 6  
Victoria & Albert with  
Slanted Gobelin Colour 50

Section 7  
Woven Basket Colours 51 & 64





#### Section 1

Slanted Gobelin Colour 31

#### Section 2

Point de Tresse Colour 63 - discontinued.  
Substitute Colour 71

#### Section 3

Norwich Colour 62

#### Section 4

Caswell Colours 29 & 62

#### Section 5

Herringbone Variation Colour 60

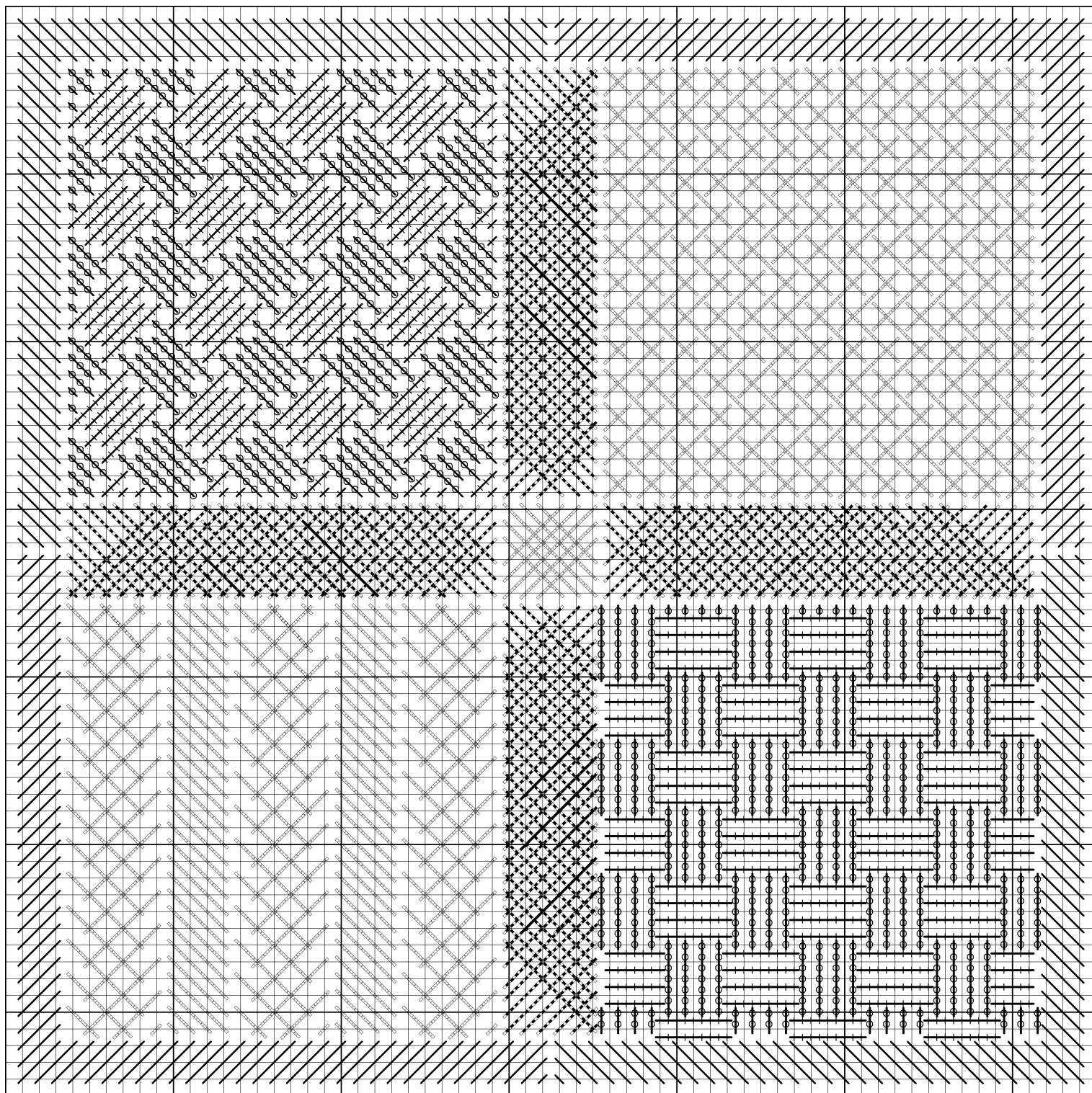
#### Section 6

Victoria & Albert with  
Slanted Gobelin Colour 60

#### Section 7

Woven Basket Colours 29 & 62





Diagrams for several of these stitches can be found in the Stitches books by Ruth Schmuff and Kathy Holicky. There are five volumes of these books and they all offer great diagrams!

Slanted Gobelin – Volume One  
Point de Tresse – diagram above

Norwich – Volume One  
Caswell – Volume Three

Herringbone Variation – diagram above  
Victoria & Albert with Slanted Gobelin – Volume Four  
Woven Basket – Volume Three

Visit [colourcomplements.com](http://colourcomplements.com) for more

